

Your Local Authorized Pet Stop Dealer is:

Phone Number:



Perimeter Technologies, Inc. • Cincinnati, Ohio 45242

© 2006 Perimeter Technologies, Inc. All Rights Reserved. Printed in U.S.A.

Our products are covered by U.S. Patent Numbers: 5,460,124 – 5,682,839 – 6,296,776
Pet Stop, Comfort Contacts, Flash Alert and Safety Stop are registered trademarks of
Perimeter Technologies, Inc.

Pet Fence Systems, The Best Fence You'll Never See, UltraElite Receiver, UltraMax Receiver,
PowerWizard, TriScann and Zapp Alert are trademarks of Perimeter Technologies, Inc.

www.petstop.com

PowerWizard™

EMERGENCY POWER SUPPLY



The Best Fence You'll Never See.™

Introduction

Congratulations on your purchase of the Pet Stop® PowerWizard™ battery back-up system. When used with the Pet Stop transmitter, it will provide a safe and secure alternative power source should your transmitter sustain a loss of electricity for a period of time. It is designed to be used to charge a lead acid battery that was supplied by your authorized Pet Stop dealer. The amount of time the unit can keep a transmitter running depends on the size of the battery used with the system.



Precaution:

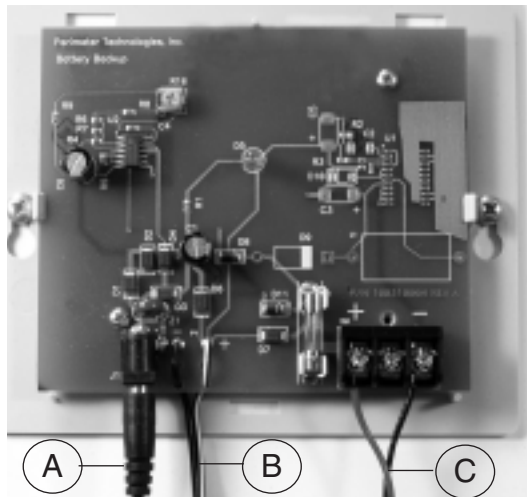
DO NOT use this product with any battery other than a 12 volt lead acid battery.

DO NOT allow a metallic object to contact both battery terminals at the same time. Doing so can present a fire hazard.

Connection Identification:

The PowerWizard battery back-up has three connection points:

- A. A small jack (denoted J1) located on the bottom left of the board. This is where the 12VAC wall adapter is connected.
- B. The power cord connects to the transmitter. This connection takes the place of a wall transformer connecting to the transmitter.
- C. The final connection point is a terminal block in the bottom right of the board. This is where the battery will be connected.



Instructions

Connecting the Battery:

1. Place the red wire under the far left screw (denoted with a "+") and tighten.
2. Place the black wire under the far right screw (denoted with a "-") and tighten.
3. There is no connection to the center screw.
4. Connect the red wire to the battery terminal (denoted with a "+").
5. Connect the black wire to the battery terminal (denoted with a "-").

These connections are made by pressing the crimped terminals onto the battery terminals.



Precaution:

It is important that the battery connections be made correctly. Crossing the polarities (connecting battery "+" to battery back-up "-") will cause the fuse on the battery back-up unit to blow.

The fuse is to protect the unit from incorrect installation. If you accidentally connect the battery incorrectly, you will need to replace the fuse after correcting the connections.

Connecting the Transformer:



Important:

The PowerWizard battery back-up must operate from a 12VAC wall transformer. A 12VDC wall transformer will not charge the battery!

1. Plug the wall transformer into the jack (J1) on the lower left side of the PowerWizard battery back-up board.
2. Plug the PowerWizard battery back-up cord into the Pet Stop transmitter. The transmitter will now have power.